

**2010**

KaonMedia

**How to use CHEditor**



## History

Version	Status	Date	Author	Description
0.1	Draft	12/May/2010	Choi, Yong-Jun	Initial Release



## Table of Contents

<b>How to use CHEditor</b> .....	1
History .....	2
Table of Contents .....	3
Preparation.....	4
STB connection, and data downloads.....	8
Editing features.....	9
● Satellite-related features .....	9
● Transponder-related features .....	10
● Provider-related features .....	11
Channel-related features .....	12
● Favorite Edit.....	13
LOCAL FILE SAVING.....	14
LOADING OF MODIFIED DATA .....	15



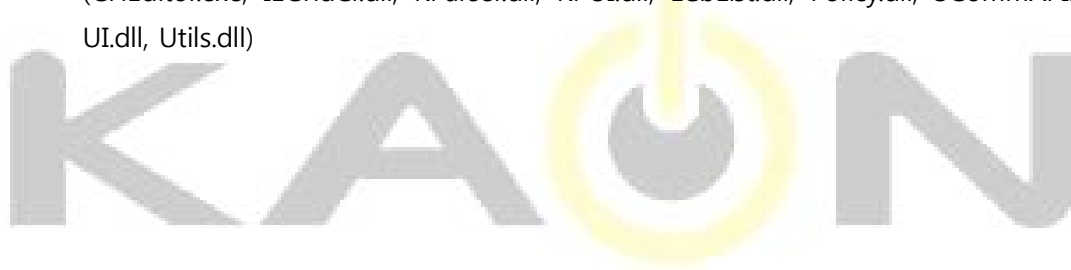
How to use CHEditor	100512-01	12/May/2010
	Page 3 of 15	Author : Choi, Yong-Jun

## Preparation

- RS-232C serial 9-pin female to female cable 1EA

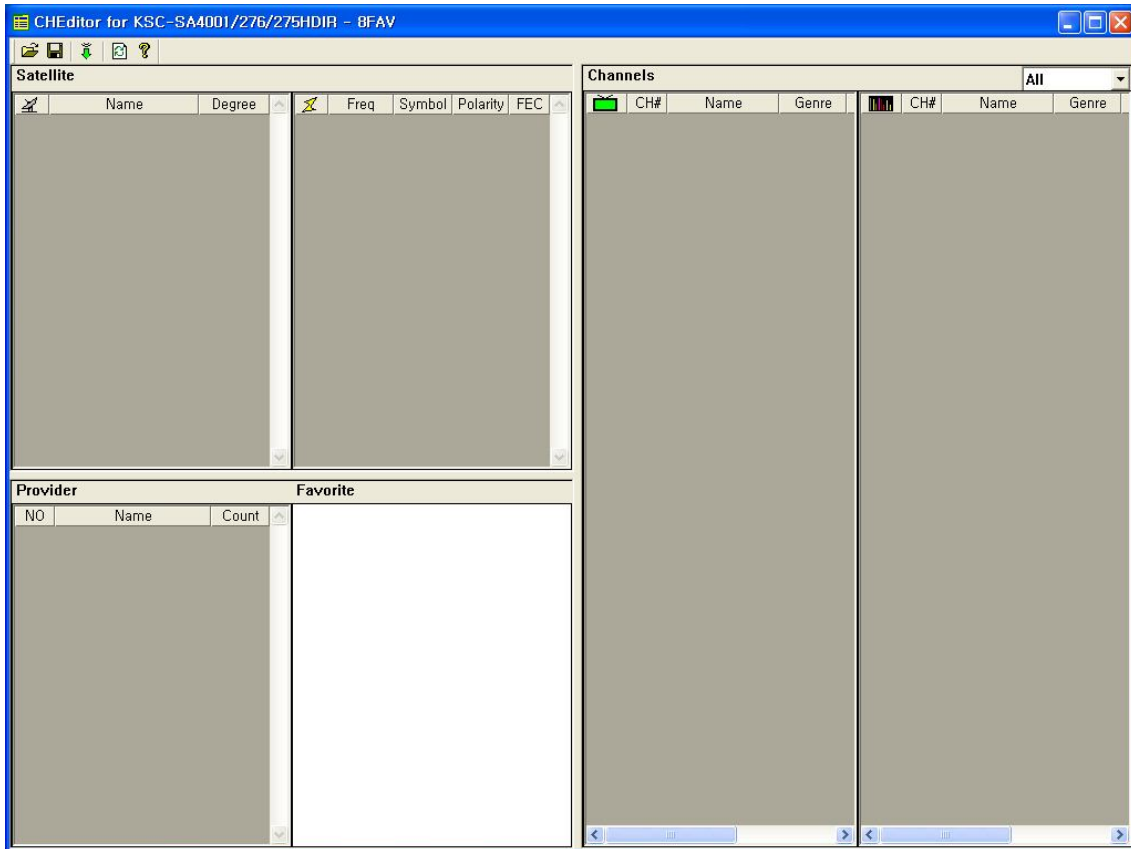


- Channel Editor tool(CEditor.exe)  
(CEditor.exe, IEGridCl.dll, KParser.dll, KPUI.dll, LCbList.dll, Policy.dll, SCommAPI.dll, UI.dll, Utils.dll)

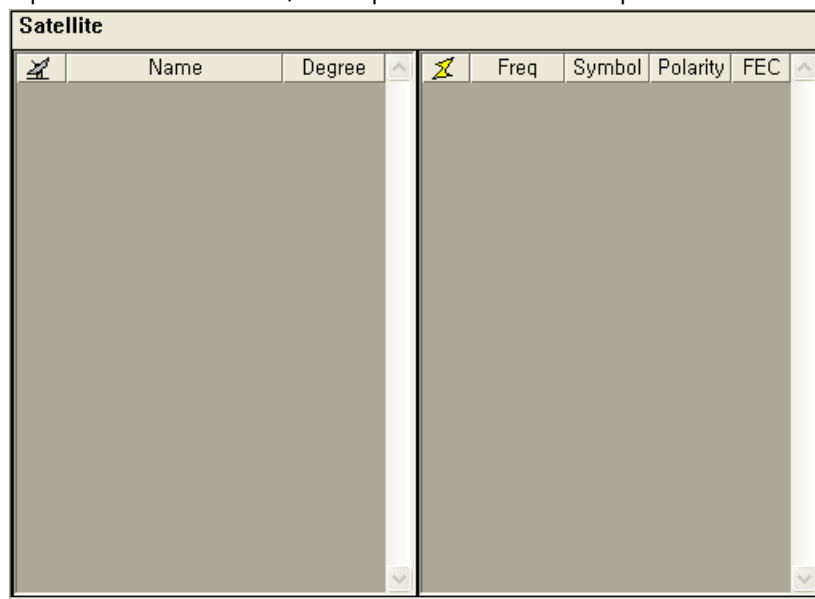


How to use CEditor	100512-01	12/May/2010
	Page 4 of 15	Author : Choi, Yong-Jun

## Structure of the entire UI



- In the figure above the entire UI is divided into three parts,
1. The top left of the Satellite / Transponder items and a portion of





2. Bottom left of the Provider / Favorite item in the part, and

How to use CHEditor	100512-01	12/May/2010
	Page 5 of 15	Author : Choi, Yong-Jun






Provider			Favorite
NO	Name	Count	

3. The right of the TV / Radio Channel item becomes divided into a part

Channels				All			
	CH#	Name	Genre		CH#	Name	Genre

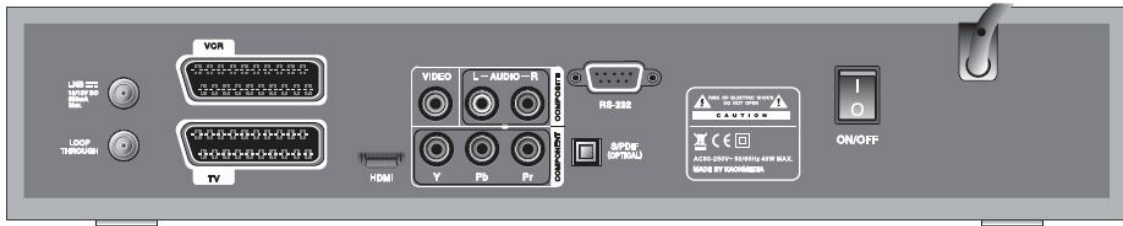
- And is provided at the top of the menu




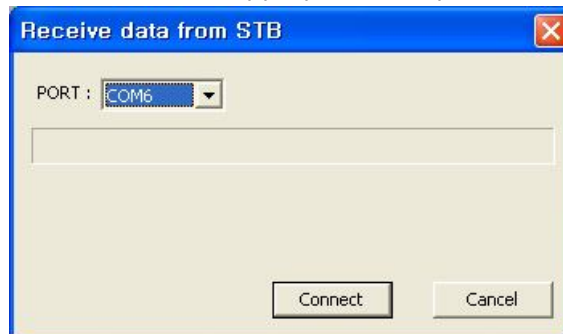
1.  Open File
2.  File Save
3.  Data Receive
4.  Refresh screen
5.  Help (Program Information)



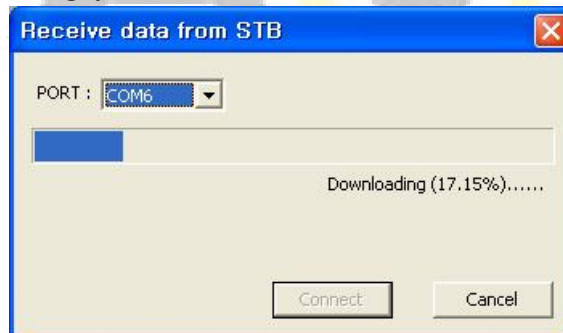
## STB connection, and data downloads



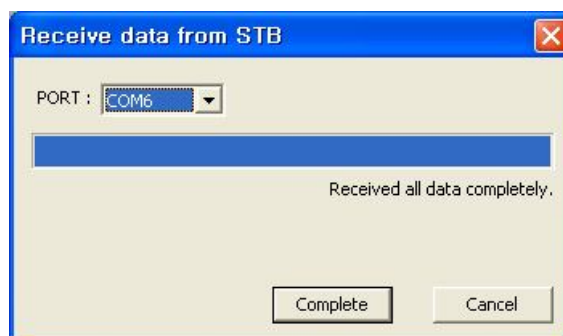
- RS-232 port in the picture above and the Serial port to PC 9-pin cable and the PC connected to the Channel Editor
- Click  icon to begin data communication.
- Select the port number which is appropriate and press the connect button



- During downloading, you can see below window.



- After downloading, click the complete button the entire data is displayed on the screen.

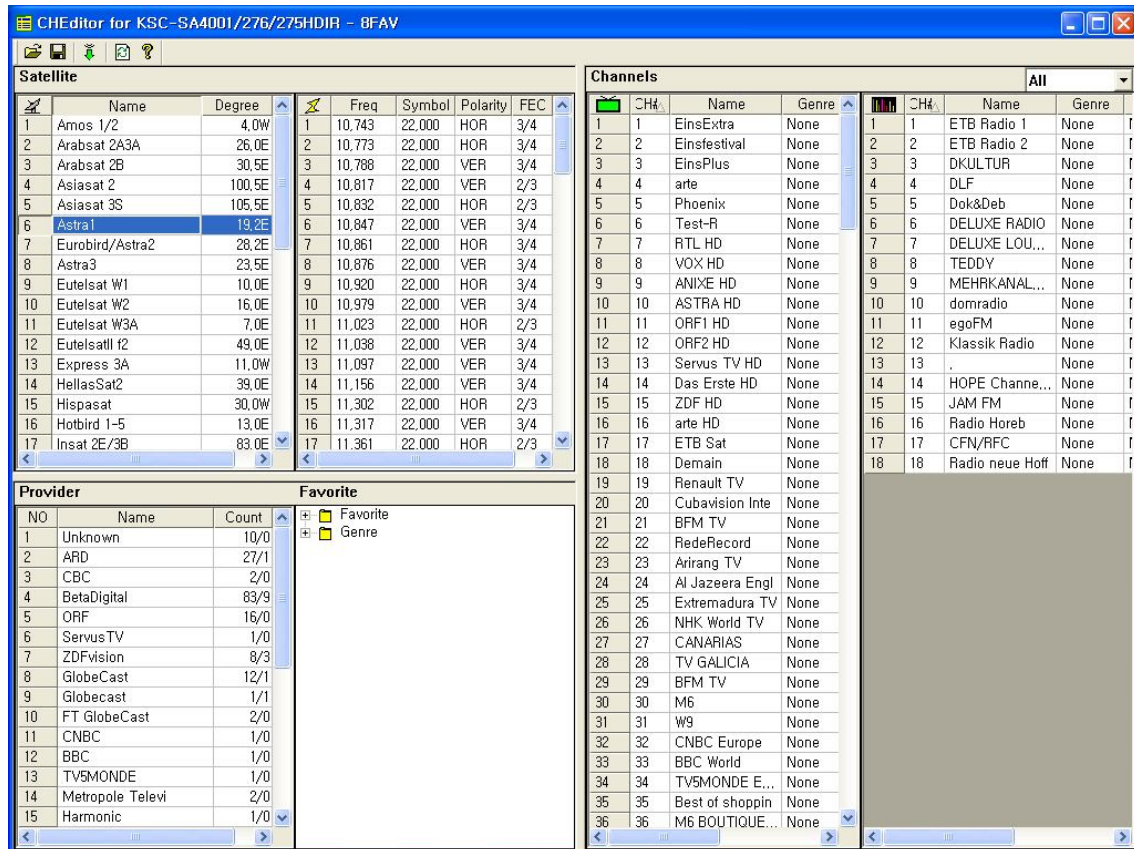


How to use CHEditor	100512-01	12/May/2010
	Page 8 of 15	Author : Choi, Yong-Jun

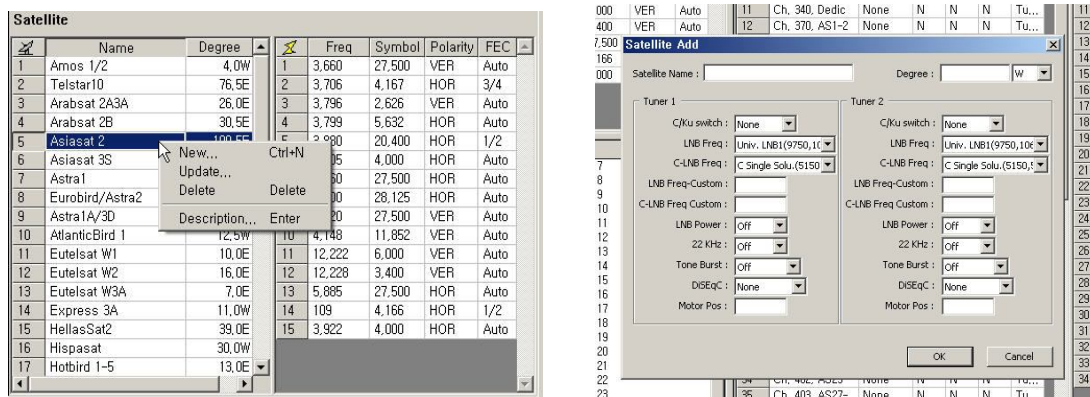


## Editing features

### • Satellite-related features



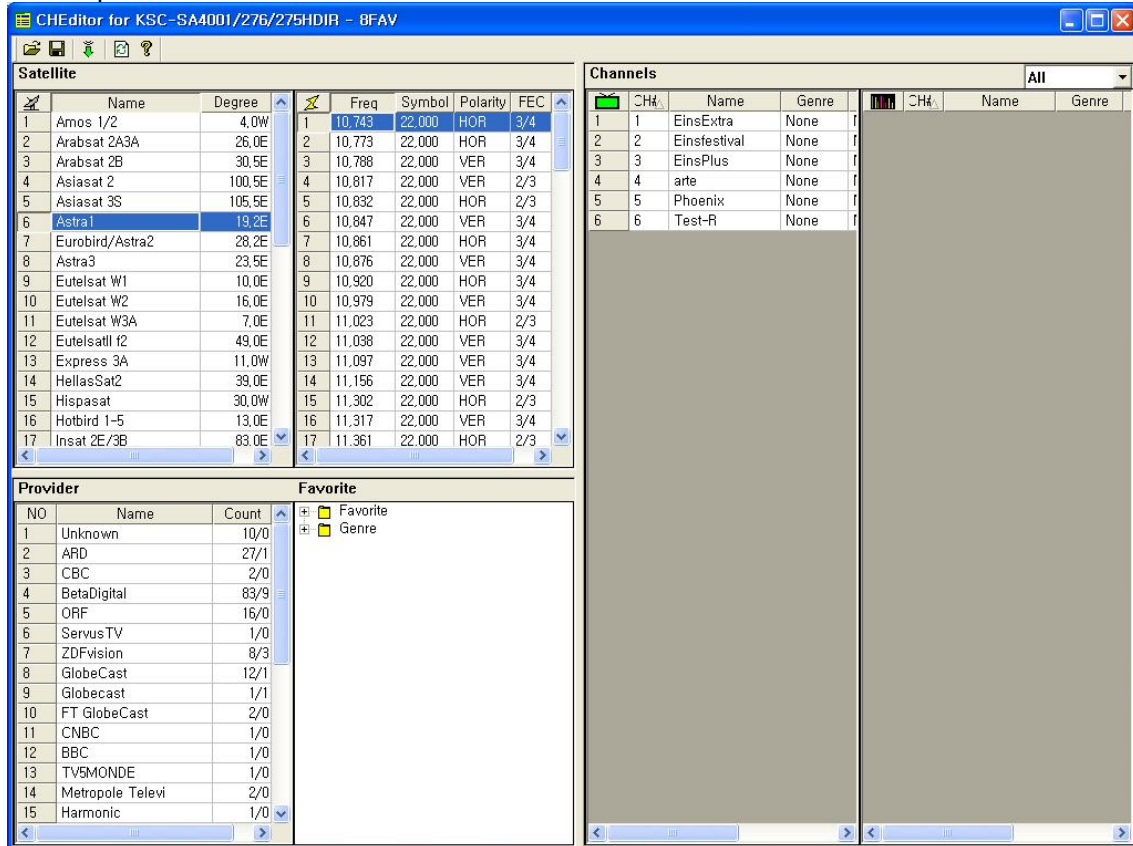
- After downloading the entire data to be output is above the screen. (STB's configuration information can be expressed differently depending on). In the above screen, once click information of satellite TP, Channel list, all information related to the selected satellite and the output will be displayed.



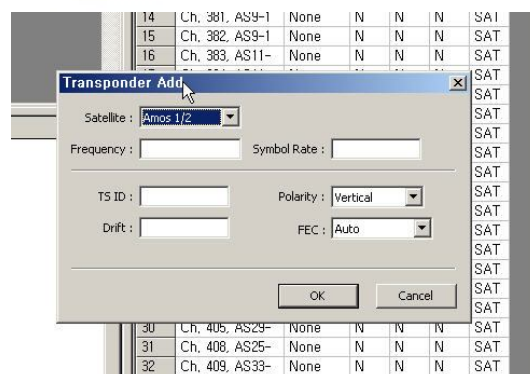
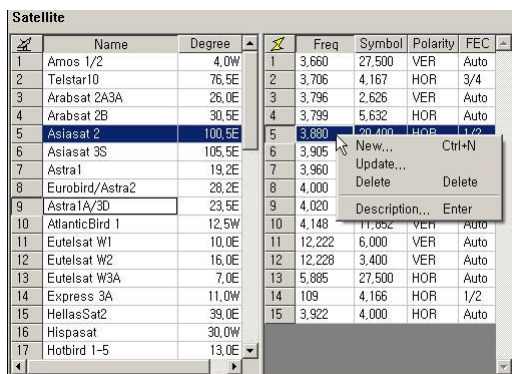
- As in the above screen, with right button menu of mouse, you may add or modify of new satellite information. And also satellite remove and displaying of registered information.

How to use CHEditor	100512-01	12/May/2010
	Page 9 of 15	Author : Choi, Yong-Jun

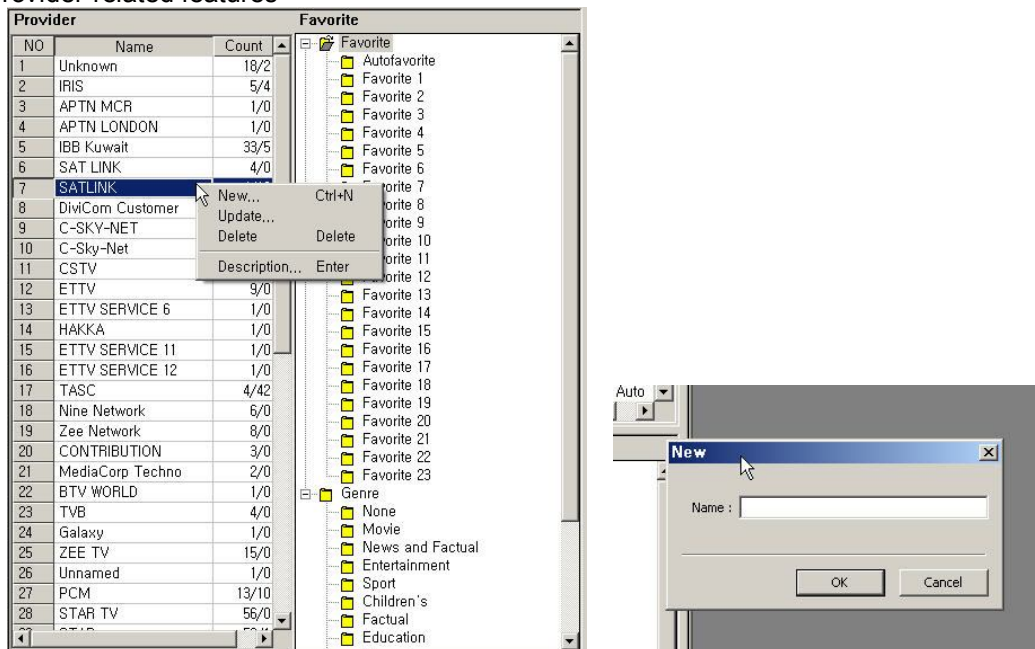
- Transponder-related features



- As shown in the picture above, click the Satellite and TP when the information corresponding to the right side of the Channel list will be out.



- Provider-related features



- As shown in the picture above, Provider information is on the list. At this point the mouse over pop-up menu to add the Provider information / changes, and can be deleted, and if this information, click on the right, the output will be all the Channel list.

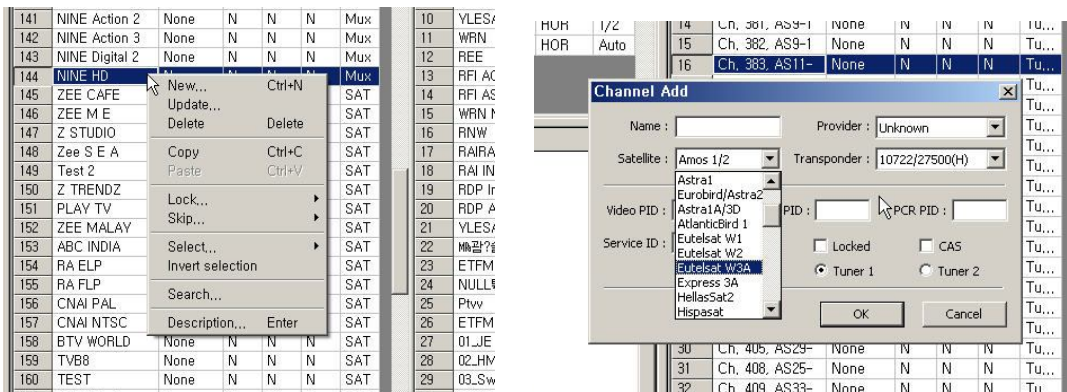
How to use CHEditor	100512-01	12/May/2010
	Page 11 of 15	Author : Choi, Yong-Jun

## Channel-related features

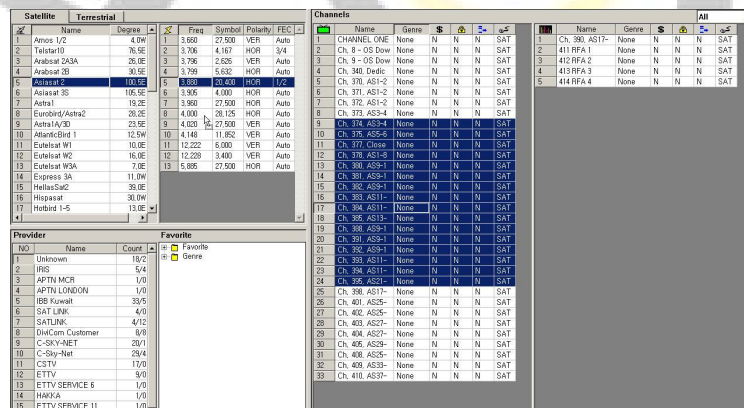


means,

1. CAS
  2. Locked
  3. Skipped
  4. Tuner Type
- In addition, through the top right of the combo box All / TV Only / Radio Only you can choose to output the information will be provided.

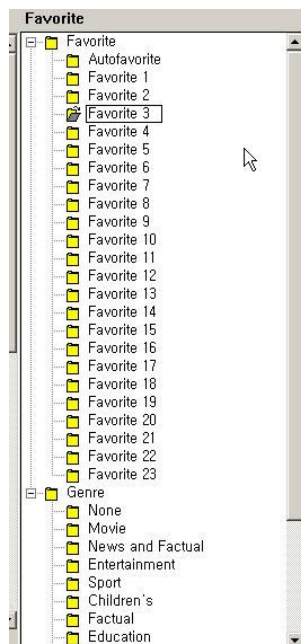


- Channel information via the mouse pop-up menu add / change, and can be deleted.
- Copy and paste the channels of information are supported.



- As shown in the picture above, multi-channel information is selected using the mouse dragging window and move it to change channels automatically, the information will be corrected.

- Favorite Edit

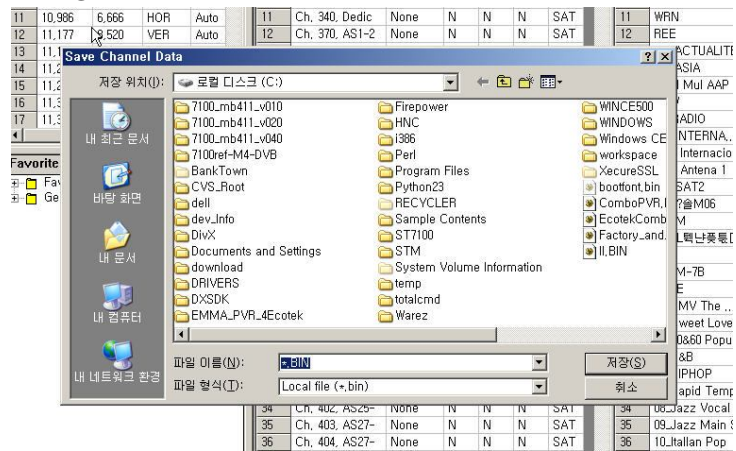


- Like in the picture above , Favorite list of the names can be changed and the number of changes and additions / deletions is not supported. And Favorite Genre of the item number and or use, depending on the specifications of the STB may be some differences.

How to use CHEditor	100512-01	12/May/2010
	Page 13 of 15	Author : Choi, Yong-Jun



## LOCAL FILE SAVING



- As shown in the above screen, Complete data can be stored on the local file, and At this point the default extension is destined to save the "\*. Bin".



How to use CHEditor	100512-01	12/May/2010
	Page 14 of 15	Author : Choi, Yong-Jun

#### LOADING OF MODIFIED DATA

- Copy \*.bin file which is saved from CHEditor onto USB memory stick or HDD.
- Connect USB memory stick or HDD to STB USB port.
- In STB Menu, select PVR → DB upgrade via USB
- Choose appropriate bin file and press the OK button.
- STB will be rebooted automatically after applying DB.



How to use CHEditor	100512-01	12/May/2010
	Page 15 of 15	Author : Choi, Yong-Jun